

ASTROGENEALOGY: Lines of Descent by Christopher Stubbs

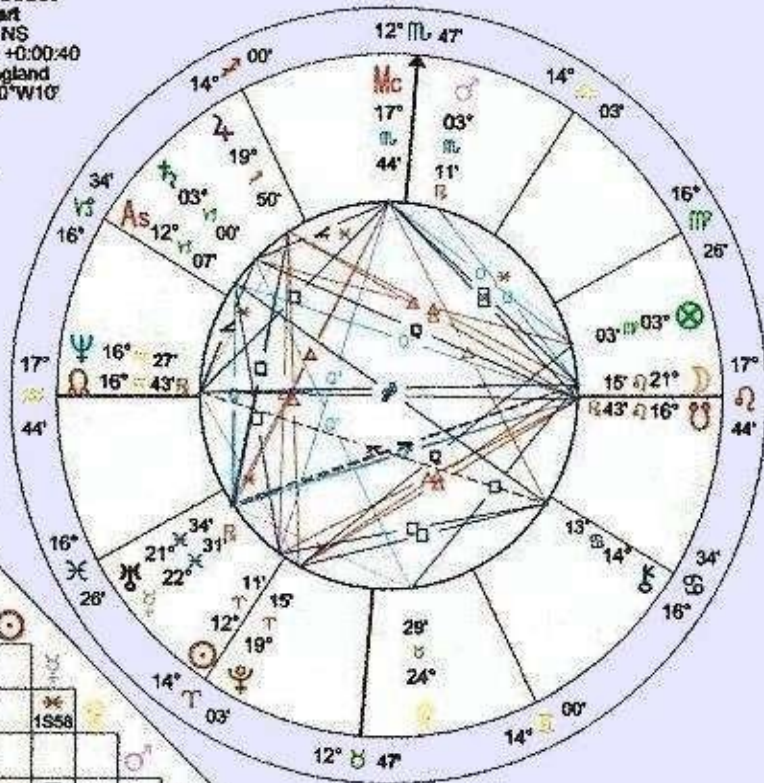
Both Astrology and Genealogy (Family History) start from the birth date, although Astrology works better when the birth time is also known. Birth dates slot into a time line for constructing family trees, that can be augmented from wills, local, national and social history, directories, service records, newspaper cuttings, surname studies, the Internet and especially photographs. But what is clearly lacking here, and what Astrology is so uniquely qualified to supply, is the personalities of the ancestors and how they interacted with each other. Probably we are far more interested in what our ancestors were like, rather than in the social conditions under which they lived. Take my wife's paternal, maternal, great grandmother, Harriet Gosset. She was born on the 2nd April 1841, in Hackney, London. Because she was descended from French Huguenots, we also know that she was born around 02:00 a.m. Figure 1 shows her horoscope and aspect grid and Figure 2 a picture of her taken about 1910.

Fig 2: Photograph of Harriet Gosset.



Fig 1: Horoscope of Harriet Gosset.

Harriet Gosset
 Female Chart
 2 Apr 1841 NS
 02:20 LMT +0:00:40
 London, England
 51°N30'00"W10'
 Geocentric
 Tropical
 Molinus
 True Node



1) Person Summary

Figure 1 shows that her Morin Point occurs at 18° Aquarius, her Sun is at 12° Aries and her Moon lies close to that point opposite to the Morin

Point at 21⁰ Leo. Neptune is rising, Mars lies close to the Midheaven in Scorpio, and Uranus, her ruler, conjoins Mercury in Pisces.

Astrologers have their own ways of producing person summaries, but we can separate ours into four small sections, namely character, relationships, career and health, that together produce a workable whole.

Generous, good-natured, impulsive, and excitable you value your sense of compassion, as well as having your own need for praise and attention. Your approach to life is gregarious, unconventional, original and objective. You view life from an intellectual stance, but need to beware of becoming too scathing of the emotional, and of the need to follow rules. You are a fast talker and like to play games that amuse your probing, quick-thinking mind. Highly intuitive with a fine imagination yet you fear anything hidden. Thus you are likely to inhibit and ignore your own inner urges, possibly even leading to paranoia.

Communication plays a key role in your life. You are drawn to unusual people but make an enthusiastic and fun-loving friend. Although you have difficulty expressing your feelings in relationships, you have a deeply felt need for just one-to-one. You need to receive attention from your loved one and like to travel with him. Relationships in your beautiful home need to be harmonious, and within it you find routine comforting and safe. You value your home, your family and its traditions deeply.

As an assertive and freedom loving individual you are a powerful person with leadership skills. Authoritarian, conservative and responsible you are quick to get to the point, enjoying challenge, coupled with an intense need for recognition in your work.

You recognise the need for cleanliness in your sexual relationships.

Harriet Gosset married Alfred Wing and had eight children. The last of these, a daughter, christened Alice Angeline, was born 7th December 1878, at Shenley, speculatively at 01:30 a.m. Figure 3 shows her horoscope plus aspect grid and Figure 4 shows a photograph of her taken in 1933.

2) Synastry²³

Alice Wing (my wife's paternal grandmother) married Ernest Manktelow, also the last of eight children, in late January, 1906. Figure 5 shows his photograph taken in 1933, and Figure 6 shows his horoscope and grid.

Fig 4: Photograph of Alice Angeline Wing.



This time we shall perform a synastry operation using Ernest as the main recipient. Knowing what we know now, it may have been useful to say the following to Ernest at Christmas, 1905.

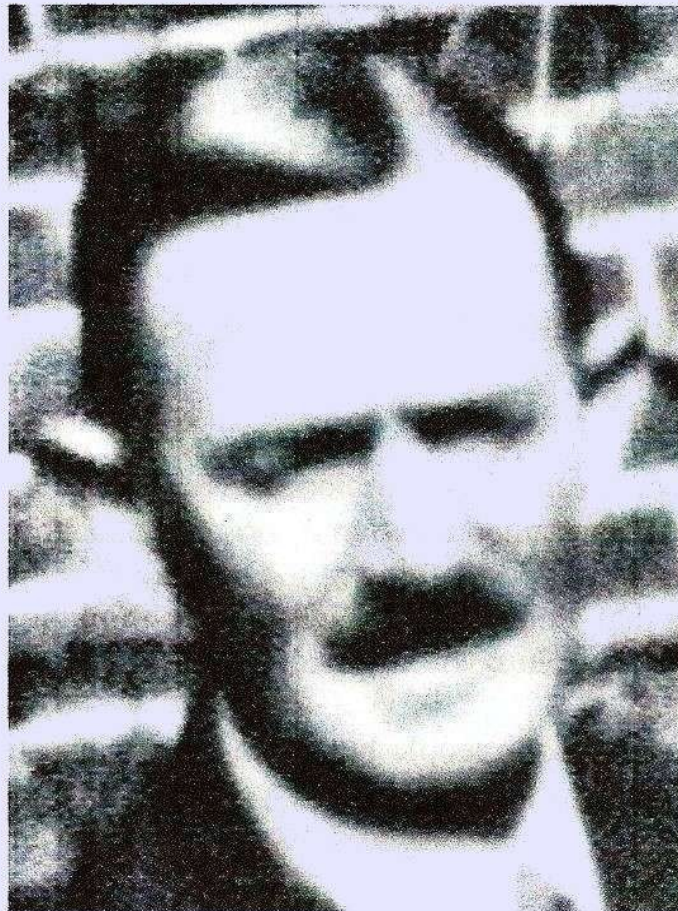
For Ernest and Alice true love is met, romance is set alight and there is a strong, sexual attraction that is combined with an enlivening, intellectual spark. Soul mates have been found and a strong and loving bond is formed: their relationship was written in the stars. Ernest is challenged to use his wits and there is fun, excitement and stimulation for them both. There is the thrill of being in each other's company, and although this may not last, they intuitively understand each other. A satisfying, long-term relationship results with mutual respect, as they feel able to tackle life's challenges together. This is because they complement each other when they join forces. Both begin to lead more creative lives.

Theirs is a life-changing relationship. Ernest feels life is more exciting and intense thanks to his relationship with Alice, but there is danger of a struggle for dominance. Nevertheless Alice shines through her association with Ernest and Ernest develops a great sense of well-being through his association with Alice.

They enjoy picnics together in picturesque and romantic surroundings. They even concur on how money is saved, spent and enjoyed. Once obstacles have been overcome they embrace the happiness of the present. There is a happy balance between responsibility and diversity so that they grow more emotionally secure, allowing each other certain independence. They communicate comfortably and enjoy each other's company having so much in common. Overall they think that they have an ideal combination for an intimate relationship.

Ernest's bad experiences from previous relationships predispose him to react pessimistically to aspects of Alice's character, perhaps her lack of sympathy, or her unreliability towards him. Thus old hurts stand in the way of honest communication. There is a need to forgive and forget loved ones, who have hurt them in the past.

Fig 5: Photograph of Ernest Manktelow.



There is a tendency for little peace in a feisty relationship but friction generated can be subverted by using their energies in home building. However there is difficulty finding the right balance between boldness and caution, between joint enthusiasm and a lack of harmony, and between individual freedom and intimacy. Hence there is a struggle to find common ground and so sustain a strong, workable and loving bond. A flavour of idyllic love develops with a desire to escape from life's harsh realities, but eventually this too becomes illusory.

We can apply these techniques to all family tree members, given their birth data.

3) Planetary Heredity.

Perhaps a greater challenge for astrogenealogy consists of identifying inherited planetary characteristics from parents to children throughout a family tree. We know that personality traits are inherited, at least in part, hence a genuine planetary effect on personality might also be partly inherited⁺. A short review (see Appendix 8) of the literature indicates that we can examine three likely sources of planetary heredity, namely: harmonic analysis in the Zodiac circle, Morinus sector analysis in the daily circle and by aspect analysis in the ecliptic (Zodiac) circle. These three analyses have been applied to three lines of descent:

1) The Line of Gosset Descent.

The members of my wife's side of the family through her father and back to his Gosset forefathers appear to possess a certain, genetically dominant, innate intelligence. To see if we can observe this astrologically, eight early recorded birth times of Gosset ancestors plus those of three direct descendants were examined. They were rectified to Ideal Birth Moments¹, Epochs noted and resulting horoscopes analysed thrice as indicated by the review. For comparison purposes a control group of eleven persons born at roughly the same time and place as the Gosset group members but related neither to themselves, nor to the Gosset group, was examined in the same way. Table 1 gives the details of the Gosset group:

Table 1: Horoscope details of the Gossets and of their Direct Descendants.

Gosset Member	Relationship to Harriet G	Time of Birth	The I.B.M.	Date of Birth	Place of Birth	Type of Epoch	Time and Date of Epoch
1	Great Aunt	09:00	08:57	23 9 1785	London	Order 2 Irreg. Sex	16:24 22 12 1784
2	Uncle	20:45	20:49	13 8 1808	London	Order 4 Reg. Sex.	04:59 25 11 1807
3	Aunt	04:10	04:12	2 10 1810	London	Order 3 Reg. Sex.	03:06 28 12 1809
4	Uncle	04:40	04:24	18 12 1812	London	Order 1 Reg. Sex.	11:06 1 4 1812
5	Aunt	02:00	02:14	25 9 1814	London	Order 1 Irreg. Sex.	06:27 22 1 1814
6	Herself	02:00	02:21	2 4 1841	London	Order 1 Irreg. Sex.	19:23 16 7 1840
7	Sister	07:00	06:40	13 2 1843	London	Order 3 Reg.	11:14 4 5 1842
8	Nephew	07:00	06:52	3 5 1865	East Grinstead	Order 3 Reg. Sex.	06:49 27 7 1864
9	Great Grand Daughter	B.S.T. 21:30	B.S.T. 21:31	30 8 1936	Bebington	Order 1 Irreg. 2.	09:13 19 12 1935
10	Great Grand Daughter	21:25	21:30	19 2 1946	Brom- borough	Order 2 Irreg. Sex.	B.W.T. 18:06 9 5 1945
11	2X Great Granddaughter	B.S.T. 04:15	B.S.T. 04:09	15 9 1972	Bebington	Order 3 Irreg. Sex.	18:18 6 12 1971

General Aspect Analysis.

The total number of aspects (ca. 250) for both births and epochs to personal planets (i.e, Sun, Moon, Mercury, Venus and Mars) and to angles (Morin Point and Midheaven⁺⁺) was about the same in both the Gosset and Control groups. Similarly the occurrence of minor aspects was roughly constant throughout. However, the most significant observation for Gosset group births was the lack of major aspects to the planet Venus (29 av. 42). The least common aspect was the trine and then the sextile (a lack of easy mental sharpness). This means that the Gosset group members tend to be awkward in their relationships with others. The next significant observation for Gosset group births was the number of major aspects to the Moon (54 av. 42) both from planets and to the Midheaven/Morin Point⁺⁺. This means that the emotional side of their

natures is well-integrated with the rest of their characteristics. These observations were noticeably not so apparent for the Control group.

Harmonic Analysis in the Zodiac (Ecliptic) Circle using Jigsaw V. 2 Astrological Computer Program²⁴.

An harmonic simply means the division of a circle of 360° by a whole number (integer). Thus the 1st harmonic is the division of 360° by 1, which gives exactly the same position on the circle again, i.e. an aspect of 0° , or a conjunction. The 2nd harmonic divides the 360° by 2 giving 180° , meaning that we have opposition aspects directly across the circle, and so on. The third harmonic gives a trine of 120° ; the 4th squares of 90° and the 6th sextiles of 60° , etc. Harmonic analysis is more complete than aspect analysis and more flexible. The use of a computer saves an inordinate amount of time and effort for the researcher. (The orb of acceptance for the 1st harmonic was taken as + or - 8° ; subsequent orbs then become 8° divided by the number of the harmonic, e.g. the allowable orb for the 4th harmonic is thus + or - 2°).

The 11 members of the Gosset group listed in Table 1, supplemented by 7 more having only approximate birth times, underwent harmonic analysis of both birth and epoch charts. Similarly, 11 controls plus 7 more underwent the same analysis that involved 11 astrological planets (Sun, Moon etc. plus Chiron) together with an initial conjunction orb of 8° . Only the first 12 harmonics were investigated. In these studies we were looking for harmonics present in the Gosset Group that were well-represented throughout the Group, but essentially lacking in the Controls.

Three harmonics stood out, i.e. the 11th, the 5th and the 10th in that order of significance ($\sum X^2 = 23, 22$ and 18) respectively. In particular the 11th harmonic is unusual but the interpretation given for this speaks of a group that *“seeks to drink from the Well of Knowledge. There is an active collective desire to gain some form of sacred or divine knowledge, which will give inspiration or clarity. This may be sought by studying but more likely by some kind of meditation or deepening process. The members of the group will know that what they seek cannot be gained by memorising figures and studying texts but rather by ‘perambulating’ the subject – winding around it, weaving in and out of it, like slowly understanding a great river by pausing often to drink from it, so that, little*

by little, you and the river become one."

This interpretation could fit the Gossets quite well, from experience, and the interpretations of the 5th and 10th harmonics also seem close to what could have been expected.

Morinus Sector Analysis.

We are looking here at the daily circle where we start at the Morin Point and divide the whole circle into equal (36, 18 or 12) sectors. For Gosset Group births only sector 1 was significant ($X^2 = 15$). For Gosset Group epochs three sectors stood out (1, 7 and 2) but certainly not as strongly as sector 1 for the births*. Throughout the Control Group no outstanding sectors were apparent.

2) The Line of Male (Stubbs) Descent.

Here there were not enough known birth times to carry out analysis in the daily circle. Thus analysis was confined to the yearly Zodiac circle and to aspects. Harmonic analysis of 40 separate, birth date charts resulted in little of significance save for a possible 7th harmonic, the interpretation of which could fit the Stubbs group well: *"The seventh harmonic has the potential both to inspire and ensnare. This family group has an emotional intensity, a touch of neurosis, and can hover on the edge of obsession, from which precarious position it can gain inspiration. Group members will both love and hate each other but if they can bind together for a while using psychic and spiritual links, they can become truly inspiring. Passionate, creative and emotionally unstable day to day business of the group often proves very difficult."*

Analysis by aspects of personal planets revealed an excess of conjunctions plus a possible excess of trines. This means that the group possesses assertive qualities dependent on the components of the conjunctions with little regard for the effect on others, but with some mitigation (trines).

3) The Line of Female Descent.

Here again there were insufficient known birth times to carry out analysis in the daily circle, but a pilot study of 8 charts using twelve sectors suggested an emphasis on the 1st sector. Harmonic analysis of 23 separate,

birth date charts resulted in little of significance apart perhaps from a 1st harmonic.

Analysis by aspects of personal planets again showed little of significance except possibly for a small excess of conjunctions. Considering the importance of the line of female descent (see Ch. 3), connecting us with our ancestors, these results were disappointing.

References and footnotes

23) Synastry, R. C. Davison, ASI Publications, New York, 1977. (Solar Fire v.6 can carry out synastry operations.)

24) Jigsaw v. 2 (developed by Bernadette Brady), Astrolabe Inc., Brewster, Maryland, USA.

* Sometimes there can be three valid epochs for one particular birth. The difficulty then is to try to pick the one that seems most likely. For example the one with the more normal gestation period, or the one that contains more or less of the required sex degrees, or the one occurring around Christmas, New Year or birthday, may be preferred. Of course there is no guarantee that we have the correct one.

+ Unfortunately the same planet in different signs, houses and experiencing different aspects can nevertheless lead to similar interpretations, thereby complicating a situation that at first sight would seem to be straightforward. This has been mentioned simply as a precaution.

++ In this analysis major aspects to the Morin Point and to the 10th House centre were included because they have an identifiable impression on interpretation.

Christopher Stubbs: *Astrogenealogy: Lines of Descent*
(chap. 7 of [Our Birth on Earth](#), Victoria, Trafford Publishing, 2009)

<http://cura.free.fr/09-10/1010stub.pdf>

All rights reserved © 2009-2010 Christopher Stubbs